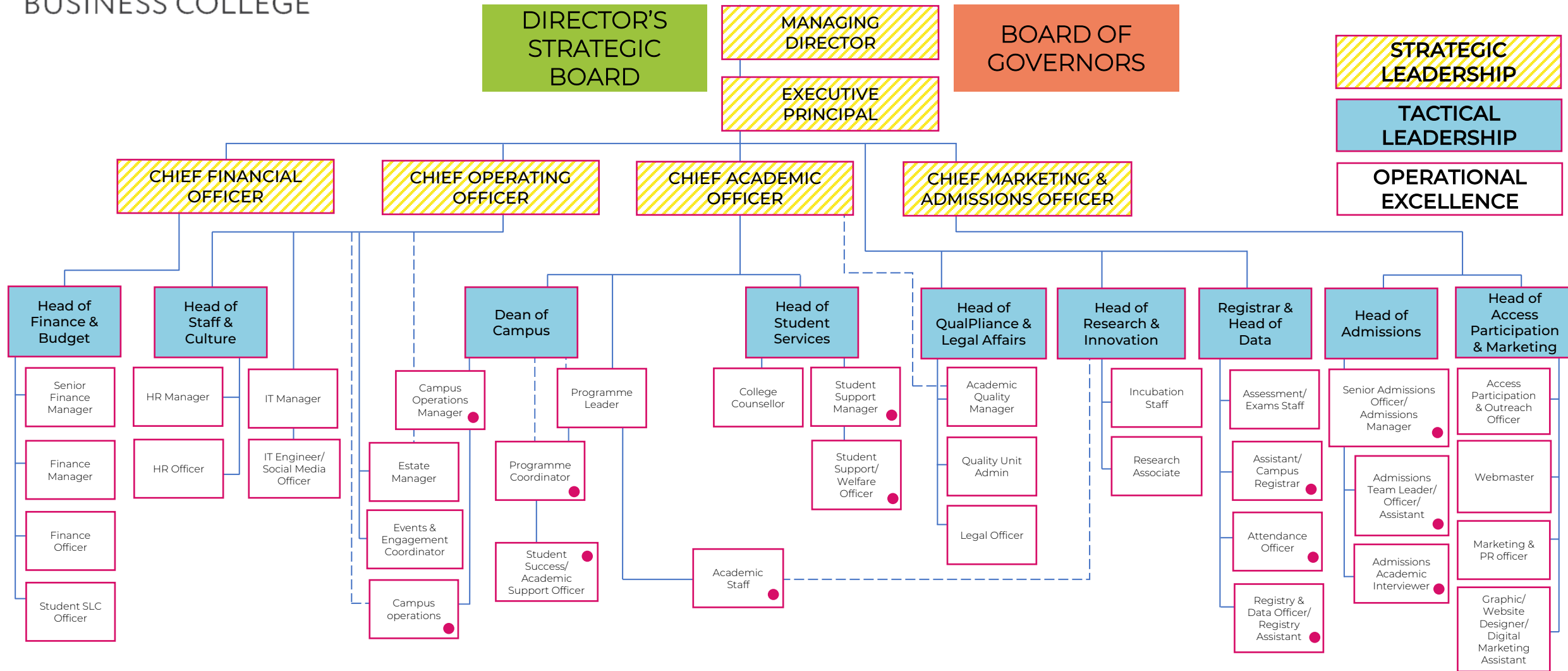


COLLEGE ORGANOGRAM



STRATEGIC LEADERSHIP

TACTICAL LEADERSHIP

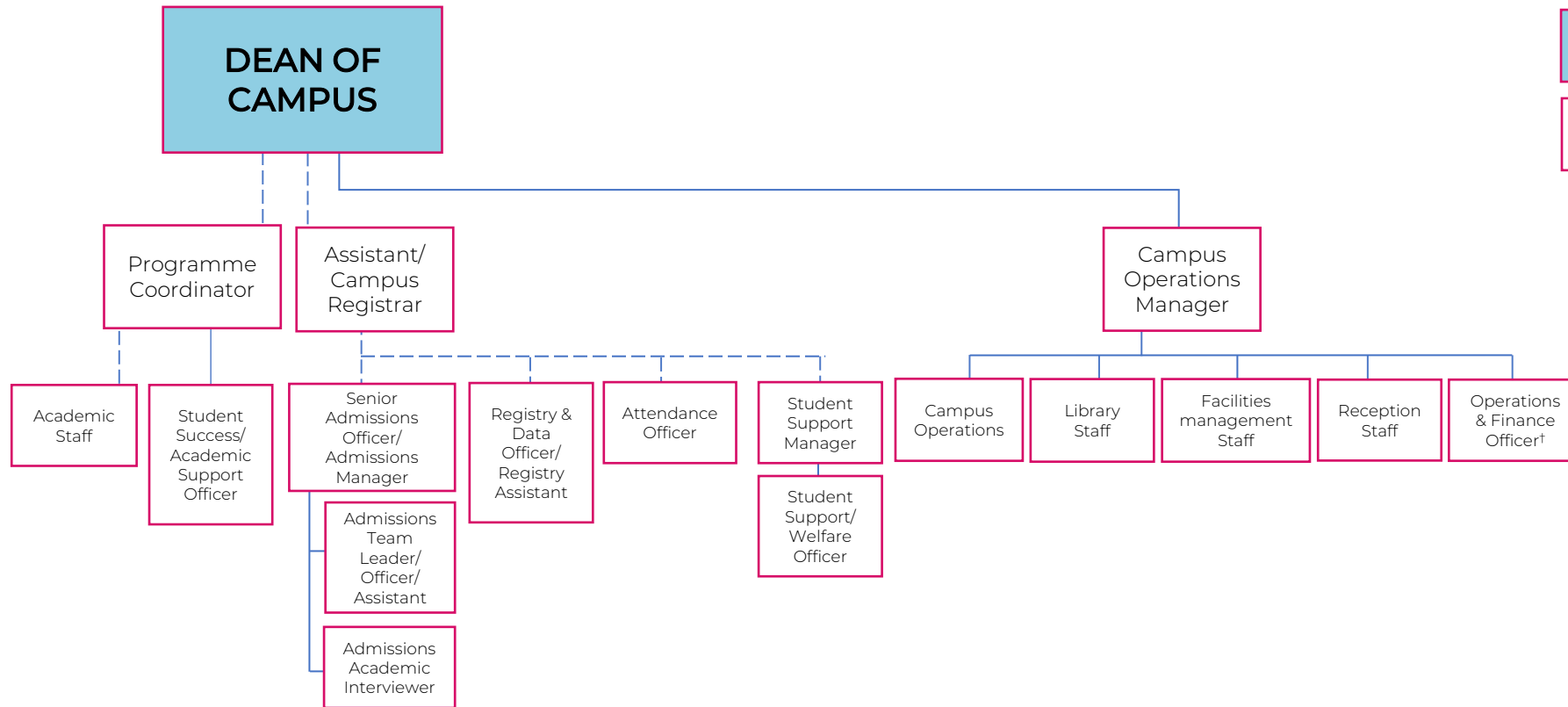
OPERATIONAL EXCELLENCE

A direct reporting relationship. It signifies the formal chain of command within the organisation, where a clear line of authority and accountability exists. Employees connected by a solid line have a hierarchical relationship, indicating a supervisor-subordinate connection. The supervisor / line manager is responsible for annual appraisals as well.

A dotted line signifies a strategic and empowered functional or advisory connection between positions or departments. It denotes a collaborative or consultative association, where the higher position holds enhanced authority and decision-making power, ensuring vertical flow of expertise. This structure enables the higher position to wield significant influence and contribute to overarching campus goals.

● Campus appointments

CAMPUS ORGANOGRAM



TACTICAL LEADERSHIP

OPERATIONAL EXCELLENCE

A direct reporting relationship. It signifies the formal chain of command within the organisation, where a clear line of authority and accountability exists. Employees connected by a solid line have a hierarchical relationship, indicating a supervisor-subordinate connection. The supervisor / line manager is responsible for annual appraisals as well.

A dotted line signifies a strategic and empowered functional or advisory connection between positions or departments. It denotes a collaborative or consultative association, where the higher position holds enhanced authority and decision-making power, ensuring vertical flow of expertise. This structure enables the higher position to wield significant influence and contribute to overarching campus goals.

† Nottingham campus only